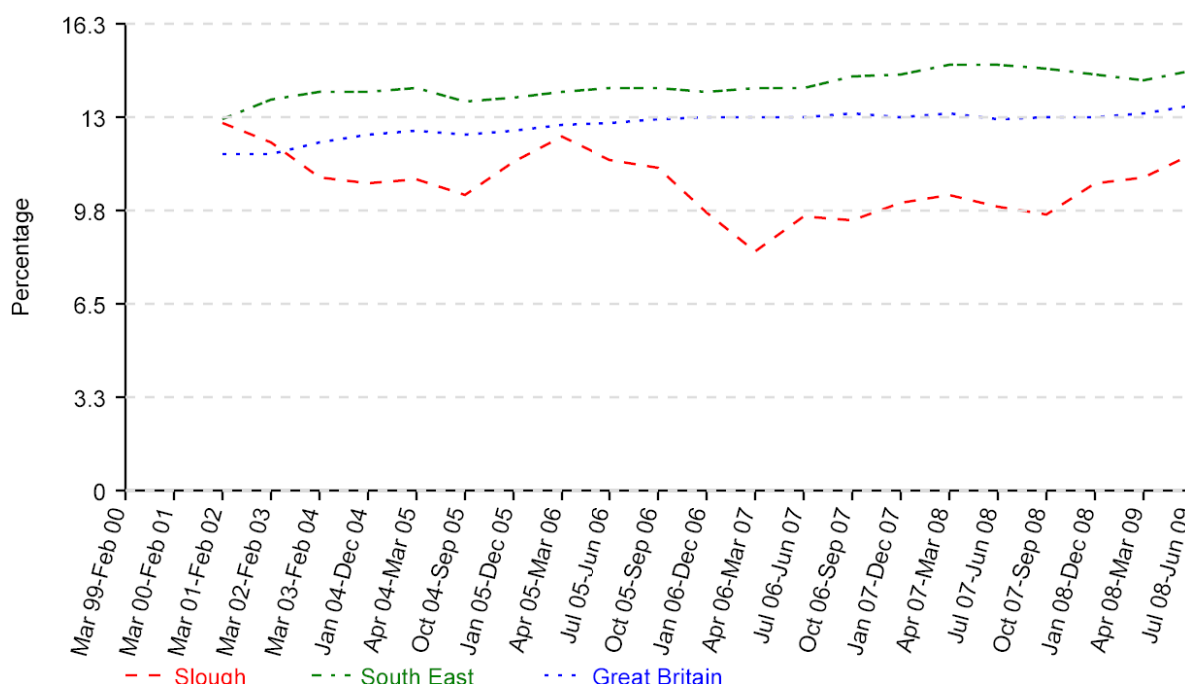


## nomis official labour market statistics

### 2 Professional occupations Slough



Date	Slough	Slough (%)	South East (%)	Great Britain (%)
Mar 99-Feb 00	-	-	-	-
Mar 00-Feb 01	-	-	-	-
Mar 01-Feb 02	8,000	12.8	12.9	11.7
Mar 02-Feb 03	7,000	12.1	13.6	11.7
Mar 03-Feb 04	6,300	10.9	13.9	12.1
Jan 04-Dec 04	6,400	10.7	13.9	12.4
Apr 04-Mar 05	6,500	10.8	14.0	12.5
Oct 04-Sep 05	6,200	10.3	13.5	12.4
Jan 05-Dec 05	6,800	11.4	13.7	12.5
Apr 05-Mar 06	7,300	12.3	13.9	12.7
Jul 05-Jun 06	6,800	11.5	14.0	12.8
Oct 05-Sep 06	6,700	11.2	14.0	12.9
Jan 06-Dec 06	5,800	9.7	13.9	13.0
Apr 06-Mar 07	4,900	8.3	14.0	13.0
Jul 06-Jun 07	5,700	9.5	14.0	13.0
Oct 06-Sep 07	5,500	9.4	14.4	13.1
Jan 07-Dec 07	5,800	10.0	14.5	13.0
Apr 07-Mar 08	6,000	10.3	14.8	13.1
Jul 07-Jun 08	5,800	9.9	14.8	12.9
Oct 07-Sep 08	5,700	9.6	14.7	13.0
Jan 08-Dec 08	6,200	10.7	14.5	13.0
Apr 08-Mar 09	6,400	10.9	14.3	13.1
Jul 08-Jun 09	6,800	11.7	14.6	13.4

Source: ONS annual population survey

- The sample size is too small to allow Labour Force Survey data to be produced

Notes: Numbers and % are for those of 16+

% is a proportion of all persons in employment

Data prior to the period Jan 05 - Dec 05 has not been reweighted in line with the latest ONS estimates. This will be done as soon as possible. For further details goto <https://www.nomisweb.co.uk/articles/424.aspx>

## Copyright

---

This material is Crown Copyright. Users are granted permission to reproduce Crown Copyright material provided that a Click-Use Licence has been obtained from HMSO. The Click-Use Licence can be obtained from [www.click-use.hmso.gov.uk](http://www.click-use.hmso.gov.uk). When reproducing this material, copyright and source should be acknowledged.